

tatamu coffee table

product information document

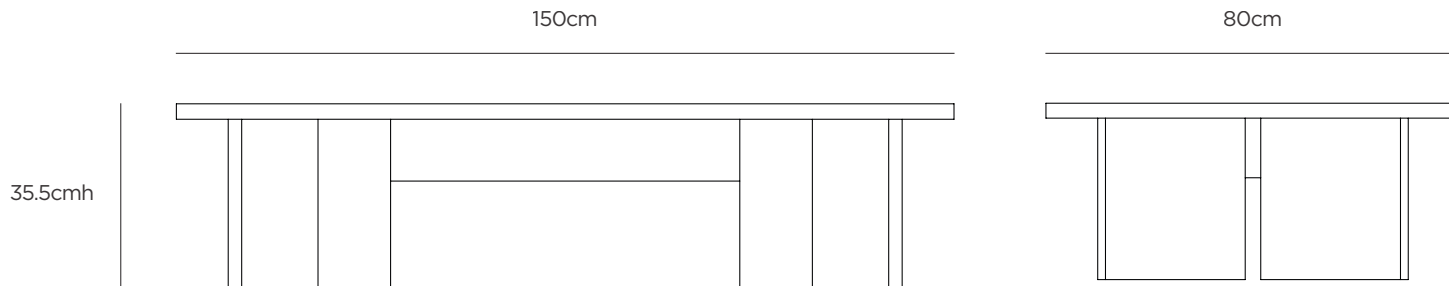


CITTÀ

tatamu coffee table

The Tatamu Coffee Table has a robust, solid oak construction, yet is aesthetically light and elegant. Its name comes from the Japanese word meaning 'to fold', with the design influenced by the oblique forms of origami structures.

The V-shaped legs are visually reminiscent of folded pieces of paper, a silhouette that is tall and thin from one profile, and broad and flat from the other, offering unique perspectives when viewed from different angles.



CODE

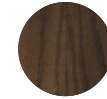
MIT0092 (Dark Oak)

MIT0091FSC (Oak)

COLOUR



Oak



Dark Oak

COMPOSITION

100% Solid Oak

WEIGHT

Packaged (2 boxes) 30.5kg /1.35kg

Assembled 23.5kg

DIMENSIONS

Assembled 150cmx80cmx35.5cmh

ASSEMBLY REQUIRED

Assembly required.

An allen key is required to assemble the table, we recommend two people complete this job together.

CARE INSTRUCTIONS

Clean with a soft damp cloth and water. Wipe immediately with a dry cloth. Avoid leaving water sitting on the wood as this can cause small spots or permanent marks. Do not use chemical cleaners on any surfaces.