

women's linen robe

product information document



CITTÀ

women's linen robe

Relax at home in our 100% linen loungewear.

Made from OEKO-TEX certified flax linen sourced from Belgium and France.

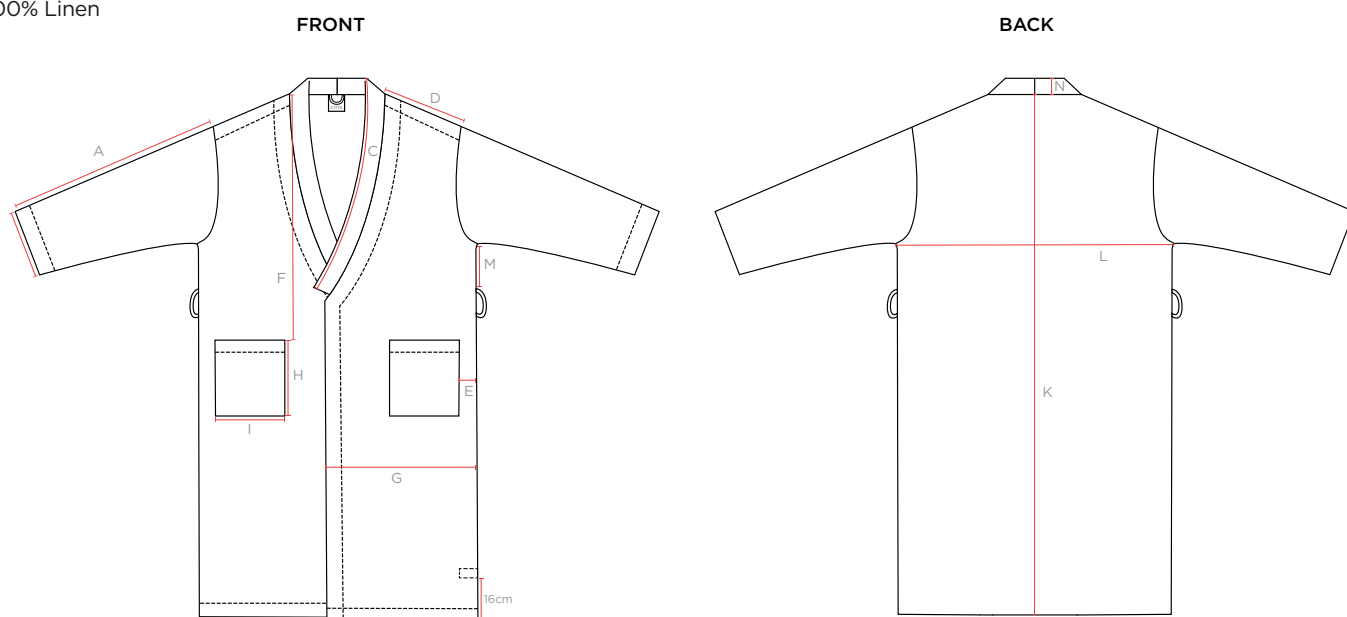
The robe has a relaxed fit with a belt that ties comfortably at the waist.

Sizing information can be viewed in the product specification section below.

Designed in New Zealand by our in-house textile designers.

MATERIAL

100% Linen



WAIST TIE



Linen Robe S/M
finished dimensions

- A Sleeve length 52cm
- B Sleeve width 18cm
- C Collar front neck drop 56.5cm
- D Shoulder Width 18.5cm
- E Pocket placement in from side seam 4cm
- F Pocket placement from HSP 52cm
- G Side width 35cm
- H Pocket length 18cm
- I Pocket width 16.5cm
- J Waist tie length x width 196cm x 5.5cm
- K Length from centre back 136cm
- L Width from underarm 58cm
- M Loop placement from underarm 16cm
- N Collar width 4.5cm

Linen Robe L
finished dimensions

- A Sleeve length 54cm
- B Sleeve width 20cm
- C Collar front neck drop 56.5cm
- D Shoulder Width 20.5cm
- E Pocket placement in from side seam 4cm
- F Pocket placement from HSP 56cm
- G Side width 37cm
- H Pocket length 18cm
- I Pocket width 16.5cm
- J Waist tie length x width 196cm x 5.5cm
- K Length from centre back 140cm
- L Width from underarm 62cm
- M Loop placement from underarm 17cm
- N Collar width 4.5cm

CARE INSTRUCTIONS

Cold gentle machine wash. Do not bleach. Drip dry in shade or tumble dry on low. Warm iron if required. Dry cleanable. Fabric fades over time. Avoid direct light sources.