

CITTÀ

Upholstery Range

We've partnered with leading textile suppliers in New Zealand & Denmark to offer you a range of beautiful & thoughtfully considered upholstery options for your new custom-made furniture.



Città – Winton

Winton is Città's very own wool boucle woven in New Zealand. The upholstery features looped wool fibres to create a beautifully tactile texture. Made with 50% mid-micron lambswool sourced from the East Cape of the North Island and 50% boucle yarn from Italy.

Composition: 98% NZ wool. 2% Nylon.
Width: 137cm
RRP: 220.00
Country of origin: New Zealand
Abrasion: Martindale 50000
GSM weight: 950

Fire Retardant: Yes
Light Fastness: 4



NEUTRAL
IWL0023



RUST
IWL0024



GREY
IWL0025

Mokum – Prato

Prato blends natural and synthetic fibres to create the luxurious look and handle of premium felted wool. Woven in the Prato region—Italy's fashion manufacturing centre.

Composition: 75% Wool. 12% Nylon. 11% Polyester.
2% Acrylic.
Width: 145cm
RRP: 126.00
Country of origin: Italy
Abrasion: Martindale 66000

GSM weight: 565.5
Fire Retardant: Yes
Light Fastness: 7



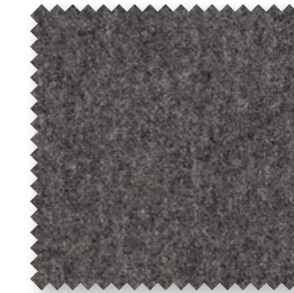
MARTINI
JAM0033



FOG
JAM0034



PEACH
JAM0035



STORM
JAM0036



DOVE GREY
JAM0037



PUMICE
JAM0038

The swatches show Città's curated collection of available colourways. Our relationship with the textile supplier also allows us to order colourways beyond this selection. To view the full range, please visit [here](#).

For internal use, use custom code: JAM0026

Mokum - Como

Como features a distinctive flat basket weave. It has a carefully constructed interlacing weave with a soft handle. Woven in Italy.

Composition: 50% Wool. 28% Acrylic. 14% Polyester.
8% Cotton.
Width: 140cm
RRP: 126.00
Country of origin: Italy
Abrasion: Martindale 70000

GSM weight: 819
Fire Retardant: Yes
Light Fastness: 6



OLIVE
JAM0039



MARCASITE
JAM0040



SILK
JAM0041



SLATE
JAM0042



LINEN
JAM0043

James Dunlop - Rough

Rough is a soft and textured velvet. It delivers a luxurious look with a light sheen. Woven in the Netherlands.

Composition: 100% Polyester
Width: 140cm
RRP: 195.00
Country of origin: Netherlands
Abrasion: Martindale 50000
GSM weight: 939

Fire Retardant: No
Light Fastness: 5



ANGORA
JAM0056



PLAZA TAUPE
JAM0057



WALNUT
JAM0058



TANNIN
JAM0059



DARK SHADOW
JAM0060



MERMAID
JAM0061

The swatches show Città's curated collection of available colourways. Our relationship with the textile supplier also allows us to order colourways beyond this selection. To view the full range, please visit [here](#).

For internal use, use custom code: JAM0027

CITTÀ

The swatches show Città's curated collection of available colourways. Our relationship with the textile supplier also allows us to order colourways beyond this selection. To view the full range, please visit [here](#).

For internal use, use custom code: JAM0029

CITTÀ

Mokum – Alpaca Velvet

Alpaca Velvet is a luxurious wool blend velvet. It delivers a sophisticated look with a deep dense pile and matte finish. Woven in Italy.

Brand: James Dunlop
Composition: 39% Cotton. 28% Alpaca. 11% Polyester.
9% Wool. 7% Nylon. 6% Viscose.
Width: 140cm
RRP: 223.00
Country of origin: Italy

Abrasion: Martindale 100000
GSM weight: 749
Fire Retardant: No - meets US Standards
NFPA 160 and Cal
Light Fastness: 5



OCHRE
JAM0062



BURNT ORANGE
JAM0063



IVY
JAM0064



WHISPER PINK
JAM0065



BLUSH
JAM0066



DUNE
JAM0067

The swatches show Città's curated collection of available colourways. Our relationship with the textile supplier also allows us to order colourways beyond this selection. To view the full range, please visit [here](#).

For internal use, use custom code: JAM0070

James Dunlop – Entwine

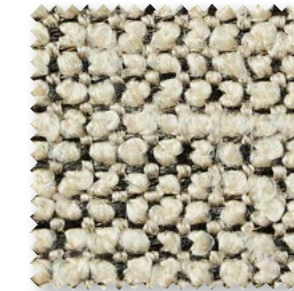
Entwine is tactile boucle and praised for its durability. The upholstery is woven in a synthetic composition and developed to emulate natural fibre. Woven in Turkey.

Composition: 82% Acrylic 18% Polyester
Width: 140cm
RRP: 79.00
Country of origin: Turkey
Abrasion: Martindale 100000
GSM weight: 838.6

Fire Retardant: No - meets US Standards
NFPA 160 and Cal
Light Fastness: 6



LINEN
JAM0072



GRANITE
JAM0073



RIVERSTONE
JAM0074

The swatches show Città's curated collection of available colourways. Our relationship with the textile supplier also allows us to order colourways beyond this selection. To view the full range, please visit [here](#).

For internal use, use custom code: JAM0071

Mokum – Bora Bora

Bora Bora is a high-performance upholstery woven with a recycled polyester blend. This holds the Global Recycled Standard (GRS) certification, ensuring the supply chain has been audited to international standards. The upholstery is expertly finished to deliver a soft, natural handle.

Composition: 51% Recycled Polyester 49% Polyester

Fire Retardant: Yes

Width: 140cm

RRP: 79.90

Country of origin: India

Abrasion: Martindale 40000

GSM weight: 1036



SHELL
JAM0080



OYSTER
JAM0081



BRONZE
JAM0082



HUSK
JAM0083

The swatches show Città's curated collection of available colourways. Our relationship with the textile supplier also allows us to order colourways beyond this selection. To view the full range, please visit [here](#).

For internal use, use custom code: JAM0084

CITTÀ

James Dunlop – Pegasus Lusk

Lusk has a beautiful linen-textured look. It is expertly woven with a blend of polyester and linen fibres to create a highly durable textile. Woven in Asia.

Composition: 88% Polyester. 12% Linen

Fire Retardant: Yes

Width: 140cm

Light Fastness: 5

RRP: 49.90

Country of origin: China

Abrasion: Martindale 85,000

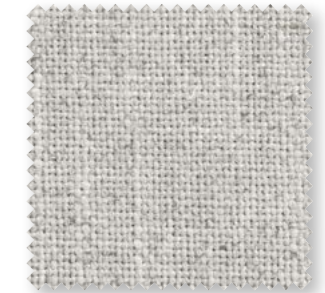
GSM weight: 812



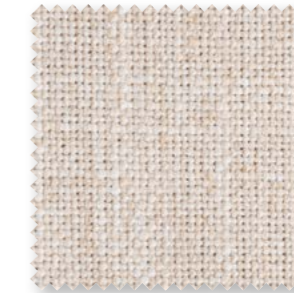
LINEN
JAM0012



REFLECT
JAM0011



SALT
JAM0005



PARCHED
JAM0010



LIMESTONE
JAM0002

The swatches show Città's curated collection of available colourways. Our relationship with the textile supplier also allows us to order colourways beyond this selection. To view the full range, please visit [here](#).

For internal use, use custom code: JAM0085

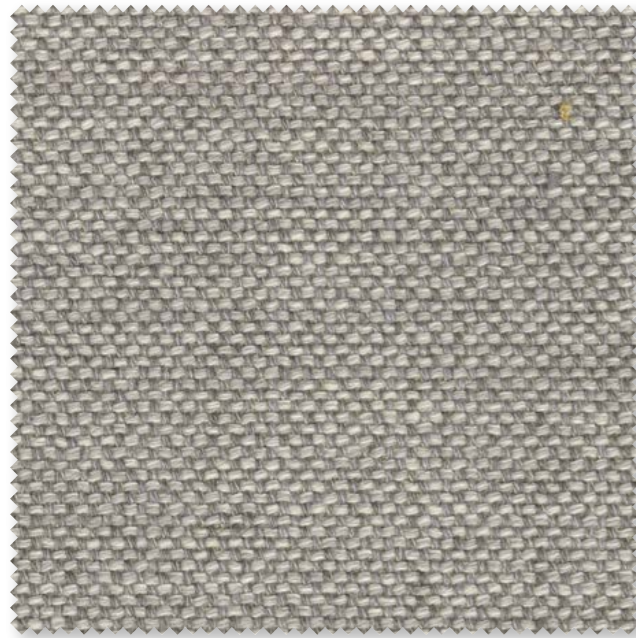
CITTÀ

Kvadrat - Sahco Clay

Sahco Clay is a high-performance upholstery with mixed colours of yarn in warp and weft to create an elegant yet casual fabric. Designed by Vincent van Duysen for Kvadrat.

Composition: 76% Linen. 21% Cotton. 3% Polyester.
Width: 140cm
RRP: 275.00
Country of origin: Turkey
Abrasion: Martindale 45000
GSM weight: 1090

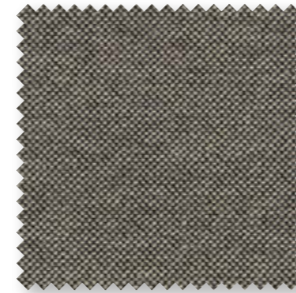
Fire Retardant: Fire resistant
Light Fastness: 5-6



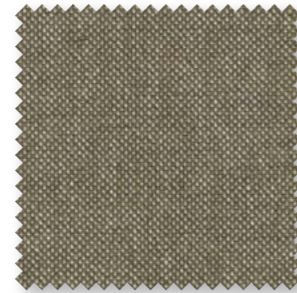
0012
KMA0001



0014
KMA0002



0009
KMA0003



0015
KMA0004



0017
KMA0005



0011
KMA0006

The swatches show Città's curated collection of available colourways. Our relationship with the textile supplier also allows us to order colourways beyond this selection. To view the full range, please visit [here](#).

For internal use, use custom code: KMA0043

CITTÀ

Kvadrat - Sahco Ecriture

A matte melange bouclé with an elegant sheen, Ecriture upholstery.

Composition: 40% Polyacrylic. 27% Polyester.
18% Viscose. 9% Linen. 6% Cotton.
Width: 140cm
RRP: 275.00
Country of origin: Italy
Abrasion: Martindale 70000

GSM weight: 1040
Fire Retardant: Fire resistant
Light Fastness: 6



0180
KMA0007



0570
KMA0008



0240
KMA0009



0200
KMA0010



0210
KMA0011

The swatches show Città's curated collection of available colourways. Our relationship with the textile supplier also allows us to order colourways beyond this selection. To view the full range, please visit [here](#).

For internal use, use custom code: KMA0044

CITTÀ

Kvadrat - Sahco Zero

The influence of Parisian couture clothing can be seen in this elegant and irregular bouclé upholstery textile. The pearl-effect yarn is used in both warp and weft, giving a luxurious handle and a sophisticated appearance.

Composition: 65% Cotton. 20% Polyacrylic.
15% Polyester.
Width: 140cm
RRP: 275.00
Country of origin: Belgium
Abrasion: Martindale 70000

GSM weight: 740
Fire Retardant: Fire resistant
Light Fastness: 6



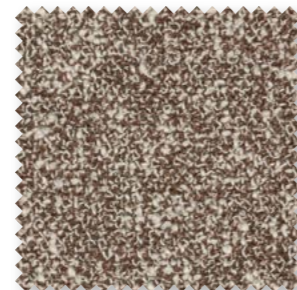
0001
KMA0012



0012
KMA0013



0002
KMA0014



0009
KMA0015



0006
KMA0016



0010
KMA0052

The swatches show Città's curated collection of available colourways. Our relationship with the textile supplier also allows us to order colourways beyond this selection. To view the full range, please visit [here](#).

For internal use, use custom code: KMA0045

CITTÀ

Kvadrat - Sahco Moss

The mixture of twisted yarn and chenille creates a textured surface with a dynamic appearance. This combination also creates a soft handle that adds a special dimension to the furniture it upholsters. Designed by Vincent van Duysen and Anna Vilhelmine Ebbesen for Kvadrat.

Composition: 65% Cotton. 20% Polyacrylic.
15% Polyester.
Width: 140cm
RRP: 275.00
Country of origin: Belgium
Abrasion: Martindale 50000

GSM weight: 1030
Fire Retardant: Fire resistant
Light Fastness: 6



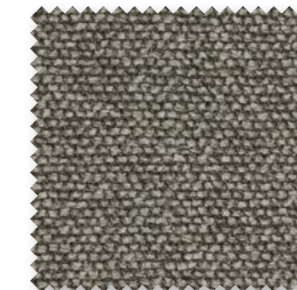
0001
KMA0017



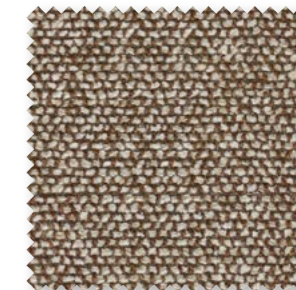
0018
KMA0018



0004
KMA0019



0015
KMA0020



0013
KMA0021



0011
KMA0022

The swatches show Città's curated collection of available colourways. Our relationship with the textile supplier also allows us to order colourways beyond this selection. To view the full range, please visit [here](#).

For internal use, use custom code: KMA0046

CITTÀ

Kvadrat - Sahco Cifrado

A heavyweight chenille, Cifrado has the soft reassurance of something well-worn and the characteristics of a heavy-duty upholstery textile.

Composition: 42% Recycled Polyester. 27% Viscose.
24% Recycled Cotton. 7% Linen
Width: 140cm
RRP: 275.00
Country of origin: Italy
Abrasion: Martindale 30000

GSM weight: 1100
Fire Retardant: Fire resistant
Light Fastness: 5-6



0111
KMA0023



0121
KMA0024



0221
KMA0025



0451
KMA0026



0791
KMA0027

The swatches show Città's curated collection of available colourways. Our relationship with the textile supplier also allows us to order colourways beyond this selection. To view the full range, please visit [here](#).

For internal use, use custom code: KMA0047

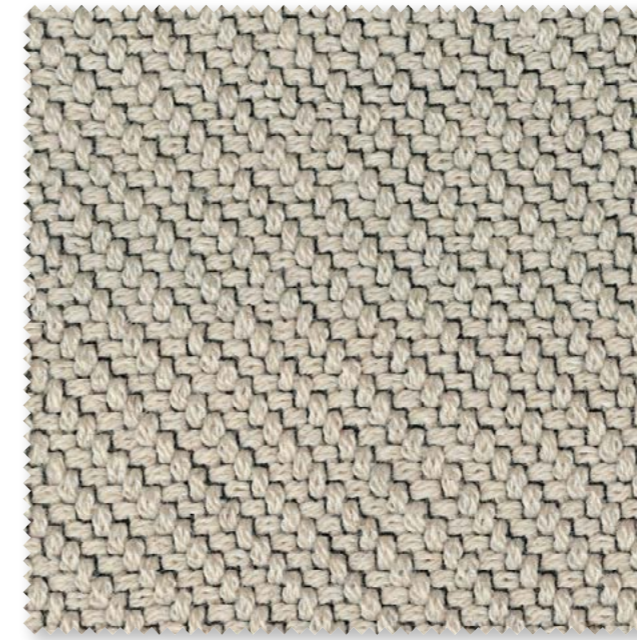
CITTÀ

Kvadrat - Coda 2

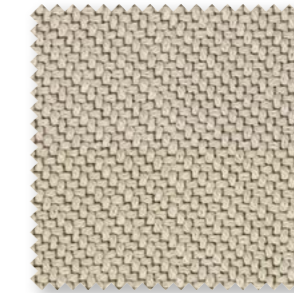
Coda 2 combines a graphic, textured surface and sophisticated colours to create a lively effect. From afar, it appears monochrome, but up close, a second colour subtly reveals itself. Designed by Norway Says & Per Bjørnsen for Kvadrat.

Composition: 90% Wool. 10% Nylon.
Width: 140cm
RRP: 365.00
Country of origin: Norway
Abrasion: Martindale 100000
GSM weight: 860

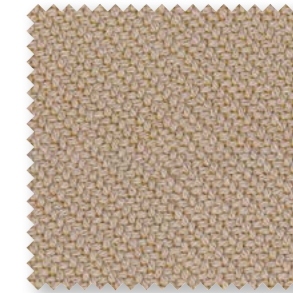
Fire Retardant: Fire resistant
Light Fastness: 6



0100
KMA0028



0103
KMA0029



0442
KMA0030



0762
KMA0031



0962
KMA0032

The swatches show Città's curated collection of available colourways. Our relationship with the textile supplier also allows us to order colourways beyond this selection. To view the full range, please visit [here](#).

For internal use, use custom code: KMA0048

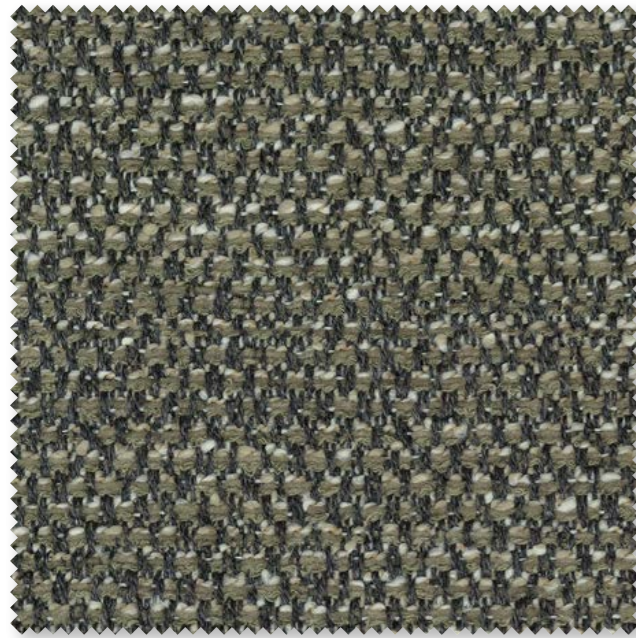
CITTÀ

Kvadrat – Savanna

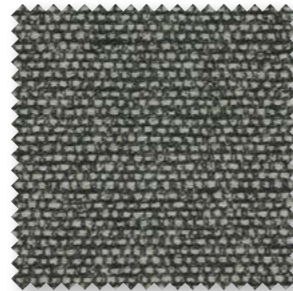
Savanna combines different types of yarns and materials to offer distinctive depth and richness. Designed by Aggebo & Henriksen for Kvadrat.

Composition: 34% Polyester. 31% Wool.
26% Polyacrylic. 3% Nylon. 4% Cotton. 2% Linen.
Width: 140cm
RRP: 195.00
Country of origin: Norway
Abrasion: Martindale 45000

GSM weight: 680
Fire Retardant: Fire resistant
Light Fastness: 6-7



0952
KMA0033



0152
KMA0034



0122
KMA0036



0242
KMA0035



0202
KMA0037

The swatches show Città's curated collection of available colourways. Our relationship with the textile supplier also allows us to order colourways beyond this selection. To view the full range, please visit [here](#).

For internal use, use custom code: KMA0049

CITTÀ

Kvadrat – Sahco Keiga

Rich in nuance like a Nordic landscape, Keiga is a versatile, foundational fabric. Matte wool grounds its rich structure, while contrasting shiny yarns add a touch of vibrance.

Composition: 38% Wool. 37% Viscose. 16% Linen.
9% Nylon.
Width: 140cm
RRP: 195.00
Country of origin: Norway
Abrasion: Martindale 50000

GSM weight: 740
Fire Retardant: Fire resistant
Light Fastness: 6



0382
KMA0038



0362
KMA0039



0232
KMA0041



0222
KMA0040



0112
KMA0042

The swatches show Città's curated collection of available colourways. Our relationship with the textile supplier also allows us to order colourways beyond this selection. To view the full range, please visit [here](#).

For internal use, use custom code: KMA0050

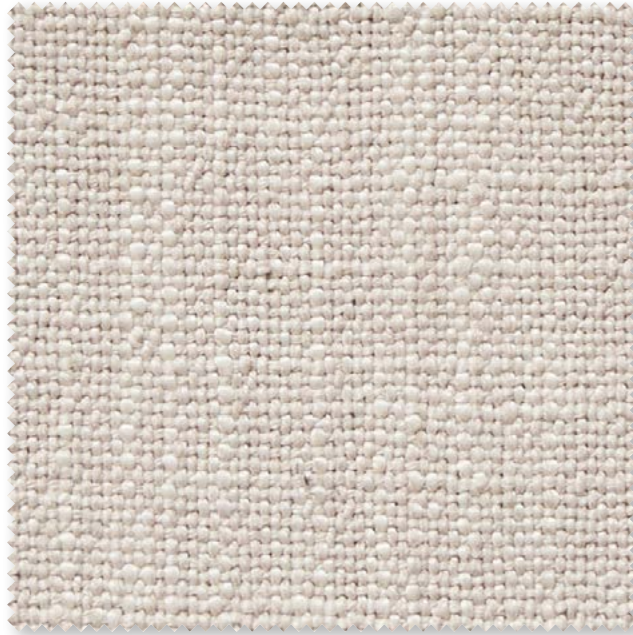
CITTÀ

Stof - Flax

A beautiful linen-textured look. It is expertly woven with a blend of polyester and linen fibres to create a highly durable textile.

Composition: 90% Polyester. 10% Linen
Width: 140cm
RRP: 90.00
Country of origin: China
Abrasion: Martindale 75000
GSM weight: 560

Fire Retardant: No
Light Fastness: 5-7 ISO 105-B02:2014



03
NFU0020



10
NFU0021



45
NFU0022

For internal use, use custom code: NFU0024

CITTÀ

Stof - Nandina

Composition: 54% Viscose. 23%Linen. 14% Polyester.
9% Cotton
Width: 140cm
RRP: 90.00
Country of origin: China
Abrasion: Martindale 30000

GSM weight: 548
Fire Retardant: Yes
Light Fastness: 6-7 ISO 105-B02:2014



99
NFU0025

For internal use, use custom code: NFU0026

CITTÀ

Textilia - Camira Main Line Flax

Main Line Flax utilises sustainable sources with a blend of virgin wool and flax.
Woven in the United Kingdom.

Composition: 70% Wool 30% Flax
Width: 140cm
RRP: 159.00
Country of origin: United Kingdom
Abrasion: Martindale 50000
GSM weight: 437

Fire Retardant: Yes
Light Fastness: 5



UPMINSTER
TEL0008



ARCHWAY
TEL0009



TEMPLE
TEL0010



EDGEWARE
TEL0011



TOWER
TEL0012

Textilia - Camira Synergy

Synergy features a wool blend to create a beautifully soft handle.
Woven in the United Kingdom using premium New Zealand wool.

Composition: 95% Virgin Wool. 5% Nylon.
Width: 140cm
RRP: 179.00
Country of origin: United Kingdom
Abrasion: Martindale 100000
GSM weight: 400

Fire Retardant: Yes
Light Fastness: 5



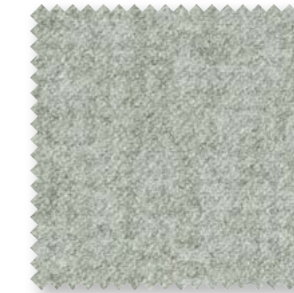
CHEMISTRY
TEL0013



INTERTWINE
TEL0014



MIX
TEL0015



SERENDIPITY
TEL0016



PARTNER
TEL0017



AFFIX
TEL0018

The swatches show Città's curated collection of available colourways. Our relationship with the textile supplier also allows us to order colourways beyond this selection. To view the full range, please visit [here](#).

For internal use, use custom code: TEL0026

CITTÀ

The swatches show Città's curated collection of available colourways. Our relationship with the textile supplier also allows us to order colourways beyond this selection. To view the full range, please visit [here](#).

For internal use, use custom code: TEL0025

CITTÀ

Warwick - Axiom Weave

Axiom features a plain weave that has an organic yet refined aesthetic. The blended composition is rustic and textured by nature with a soft and relaxing feel.

Brand: Warwick Fabrics

Composition: 48% Cotton. 25% Polyester. 18% Viscose.
9% Linen.

Width: 140cm

RRP: 152.00

Country of origin: Italy

Abrasion: Wyzenbeek 55000

GSM weight: 620

Fire Retardant: No

Light Fastness: 5



OLIVE
WFL0088



MIDNIGHT
WFL0089



NATURAL
WFL0091



COAL
WFL0094



RICE
WFL0152



CLAY
WFL0153

The swatches show Città's curated collection of available colourways. Our relationship with the textile supplier also allows us to order colourways beyond this selection. To view the full range, please visit [here](#).

For internal use, use custom code: WFL0142

CITTÀ

Warwick - Theodora

Theodora is a versatile velvet with rich colours and a sumptuous texture. It sets a lavish tone with a subtle sheen and soft short-pile finish.

Composition: 100% Polyester

Width: 140cm

RRP: 122.00

Country of origin: United Kingdom

Abrasion: Martindale 95000

GSM weight: 470

Fire Retardant: Yes

Light Fastness: 5



ARMY
WFL0146



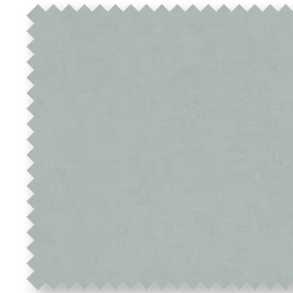
COPPER
WFL0147



BRASS
WFL0148



FOSSIL
WFL0149



NICKEL
WFL0150



THUNDER
WFL0151

The swatches show Città's curated collection of available colourways. Our relationship with the textile supplier also allows us to order colourways beyond this selection. To view the full range, please visit [here](#).

For internal use, use custom code: WFL0143

CITTÀ

Sorensen - Ultra Leather

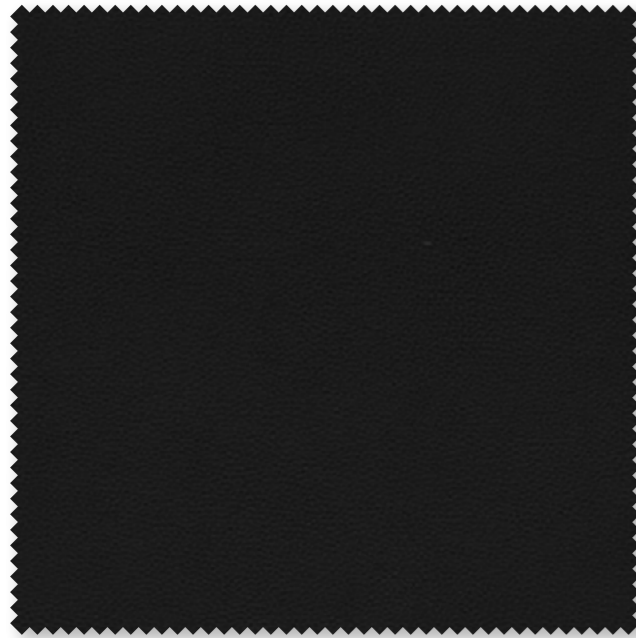
Ultra is a versatile protected leather, ideal for everyday use. Buffed and embossed, the surface features a uniform grain pattern over the entire hide. A strong protective finish helps to provide easy maintenance.

Composition: 100% Leather

Width:

RRP: 0.00

Country of origin: Denmark



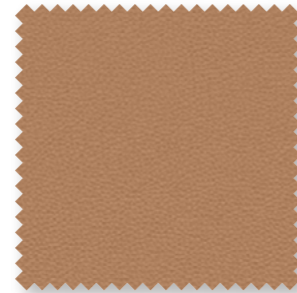
41599 BLACK
SLE0001



41574 BRANDY
SLE0002



41598 COGNAC
SLE0003



41571 CAMEL
SLE0004



41580 ANTHRAZITE
SLE0005



41589 CHOCOLATE
SLE0006

The swatches show Città's curated collection of available colourways. Our relationship with the textile supplier also allows us to order colourways beyond this selection. To view the full range, please visit [here](#).

For internal use, use custom code: SLE0007

CITTÀ

Sorensen - Nuance Leather

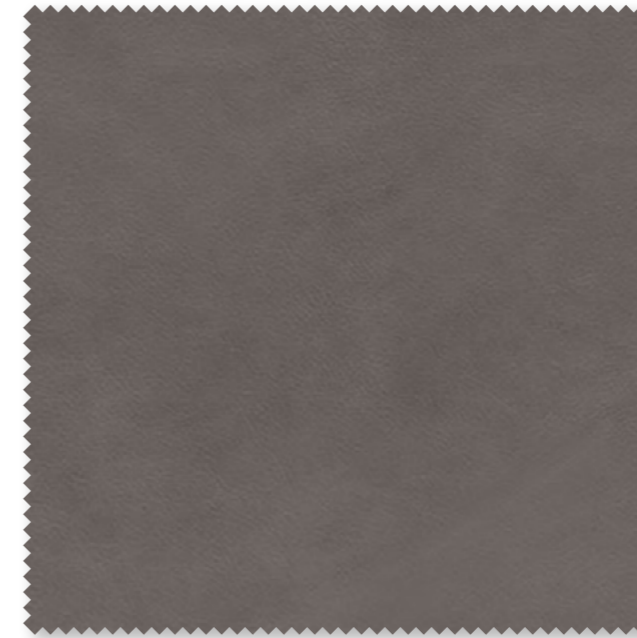
Nuance is a protected leather developed in collaboration with Space Copenhagen. The leather provides a lush, tactile touch with natural patterns visible, reflecting the innate beauty of each hide. A light, invisible coating keeps the subtleties and softness intact while protecting the leather from wear and tear.

Composition: 100% Leather

Width:

RRP: 0.00

Country of origin: Denmark



40785 SMOKED GREY
SLE0008



40783 BURNED GREY
SLE0009



40790 WALNUT
SLE0010



40787 DARK GREEN
SLE0011



40788 CINNAMON
SLE0012



40786 RUST
SLE0013

The swatches show Città's curated collection of available colourways. Our relationship with the textile supplier also allows us to order colourways beyond this selection. To view the full range, please visit [here](#).

For internal use, use custom code: SLE0014

CITTÀ