

# linen shirt

product information document



**CITTÀ**

# linen shirt

Set the weekend mood to easy living and relaxed sophistication with this Linen Nightie. The nightie has a relaxed fit and is made from 100% linen.

---

## MATERIAL

100% Linen

## DIMENSIONS

Small/Medium | Large

### A - CHEST WIDTH

55cm | 60cm

### B - LENGTH

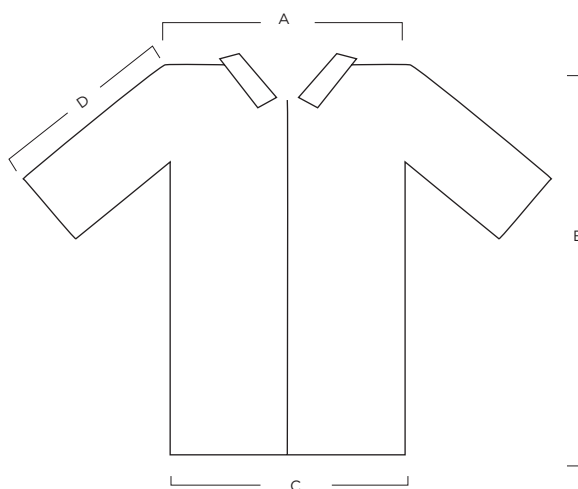
71cm | 75cm

### C - BOTTOM HEM

58cm | 61cm

### D - ARM LENGTH

22.5cm | 25cm



---

## CARE INSTRUCTIONS

Cold gentle machine wash. Do not bleach. Drip dry in shade or tumble dry on low. Warm iron if required. Dry cleanable. Fabric fades over time. Avoid direct light sources.