

CITTÀ

Tatamu Coffee Table

Product Information Document

The Tatamu coffee table has a robust, solid oak construction, yet is aesthetically light and elegant. Its name comes from the Japanese word meaning 'to fold', with the design influenced by the oblique forms of origami structures.

Designed in our New Zealand studio by David Moreland and Nikolai Sorensen.

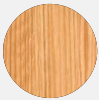


Tatamu Coffee Table

Material

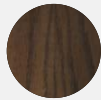
Solid oak

Colour



Oak

MIT0091FSC



Dark Oak

MIT0092FSC

Dimensions Packaged (two boxes): 158.5 x 87.5 x 11.5 cm(h)
51.5 x 39.5 x 29.5 cm(h)

Dimensions Assembled: 150 x 80 x 35.5 cm (h)

Weight Packaged (two boxes): 30.5 / 14.5 kg

Weight Assembled: 35 kg

Residential Warranty: 3 years

Commercial Warranty: 3 years

Assembly Instructions

An allen key is required to assemble the table, we recommend two people complete this job together.

Care Instructions

Clean with a soft damp cloth and water. Wipe immediately with a dry cloth. Avoid leaving water sitting on the wood as this can cause small spots or permanent marks. Do not use chemical cleaners on any surfaces.

