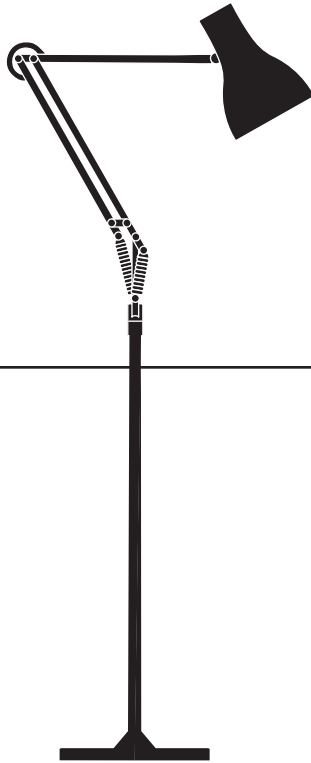


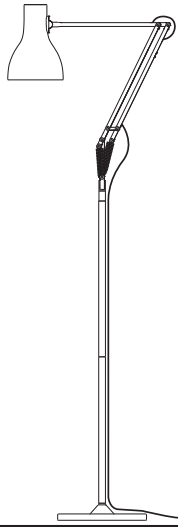
ANGLEPOISE®

Type 75™ | Designed by Sir Kenneth Grange



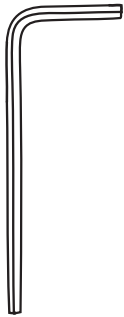
Type 75™
Floor Lamp

Type 75™ Floor Lamp

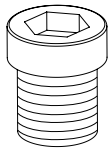


ASSEMBLY PARTS & TOOLS:

Your Anglepoise® comes supplied with everything you need to assemble and install your product. The assembly parts and tools you'll find in the box are:



1 x 100217
Allen Key



2 x 100033
Grub Screw
(One Spare)



4 x 100532
Pole Clip

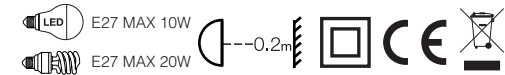
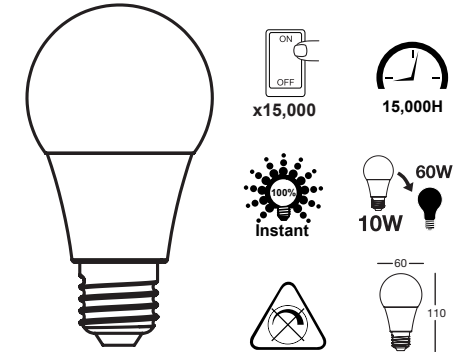
PARTS NOT TO SCALE

BULB INFORMATION:

Your Anglepoise® is supplied with a 10W E27 LED bulb with a colour temperature of 2700K - this is the bulb we recommend for most applications.

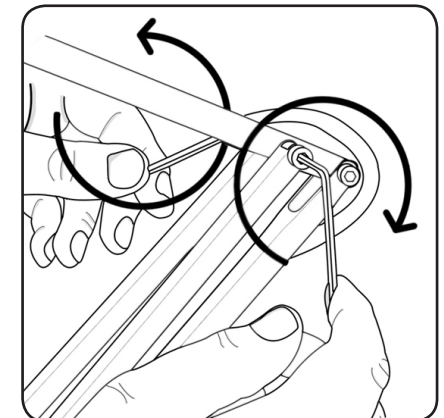
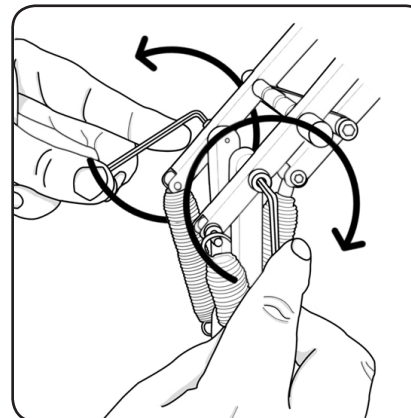
If you require a different light output you can use an alternative bulb but please be aware that a heavier bulb may affect the balance mechanism. We recommend a bulb weight of 25g-60g.

Important: Please be careful not to use a bulb which exceeds the maximum wattage indicated inside the shade.

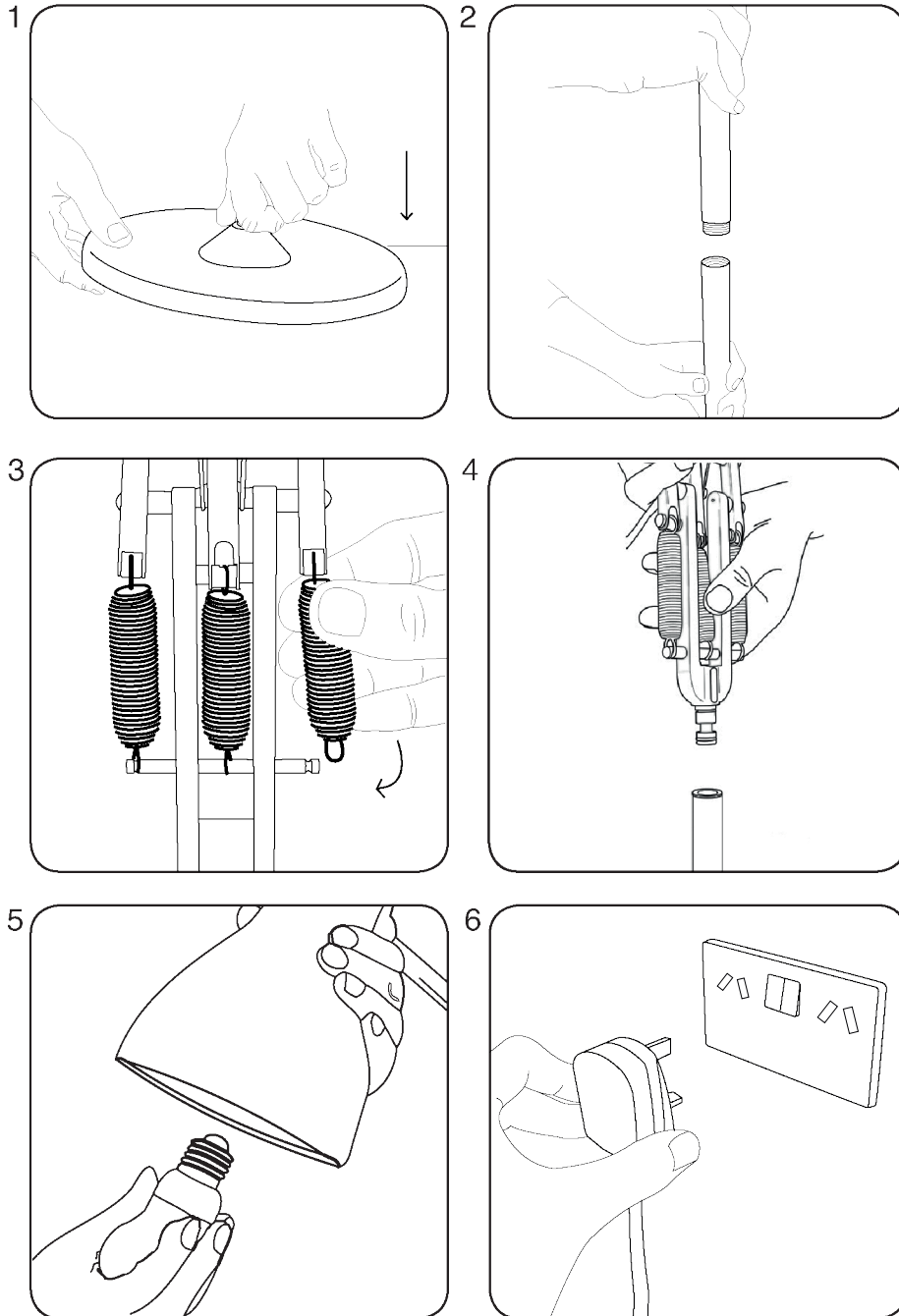


ADJUSTMENT:

Your Anglepoise® lamp is a finely balanced product. Ensuring the bulb is of the correct weight (25g-60g), is essential for achieving perfect balance. Once your lamp is assembled, you can use the Allen keys provided to fine tune the arms and shade.



INSTALLATION:



INSTRUCTIONS:

1. Remove base from the packaging and place onto an even surface.
2. Screw the two pole sections together and then screw onto the base.
3. Attach the two outer springs to the lamp.
4. Take the lamp and place it onto the floor pole. Screw in the locating grub screw using the Allen key provided.
5. Screw in the bulb.
6. Plug the product in and turn it on using the foot switch.

ADJUSTMENT

Your Anglepoise® is a finely balanced product. To adjust the lamp, place on a level surface as a sloping surface will upset the balance. If necessary, carefully tighten the nuts until the shade and arms support themselves in any position. To avoid damage caused by excessive force, please take care with the movement range and characteristics of your product. It is also advisable to allow the shade to cool before adjustment or repositioning.

MAINTENANCE

Prior to cleaning or maintenance, always switch off and disconnect from the electricity supply and allow the shade to cool. **Repairs and the replacement of damaged cables or electrical parts should only be carried out by a qualified electrician, an authorised distributor or by Anglepoise® Ltd.**

Your product should only be used in a dry indoor environment.

It is essential that any replacement bulb does not exceed the maximum wattage indicated inside the shade.

QUALITY AND SAFETY

This product is marked to demonstrate conformity with relevant directives. The minimum operating distance from illuminated objects and surfaces is 0.2m.

Rated Voltage 220V-240V AC / 50-60Hz.